



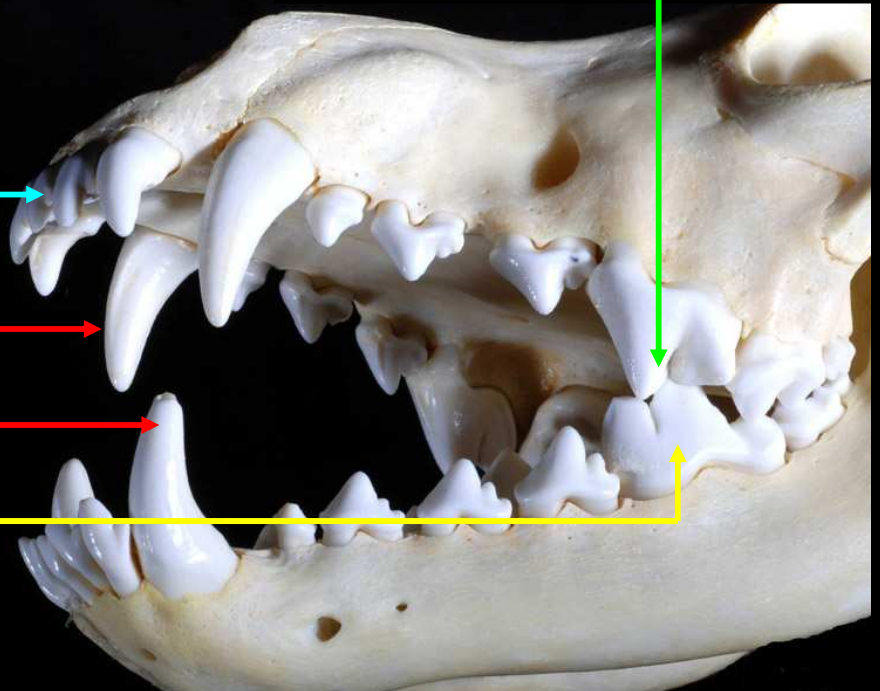
Loup (Canis lupus)

Carnassière
(prémolaire tranchante)

Incisives

Canines
en crocs

Carnassière
(molaire tranchante)

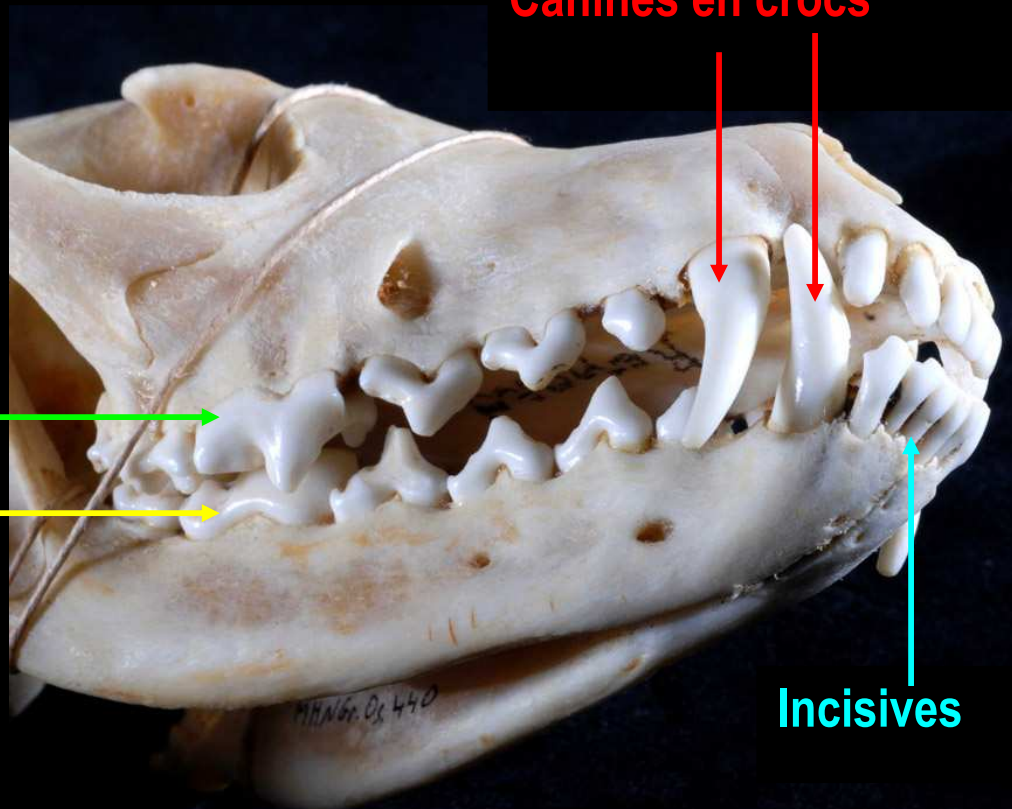


Renard roux (Vulpes vulpes)

Canines en crocs

Carnassière
(Prémolaire tranchante)

Carnassière
(Molaire tranchante)



Incisives



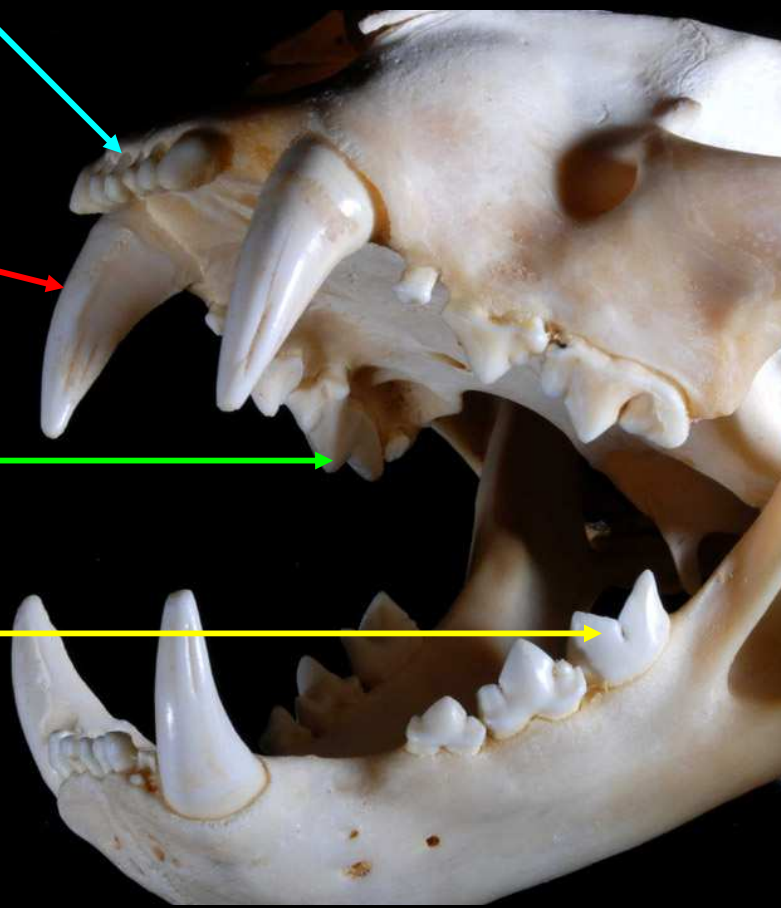
Lion (*Felix leo*)

Incisives

Canines en crocs

Carnassière
(prémolaire tranchante)

Carnassière
(molaire tranchante)



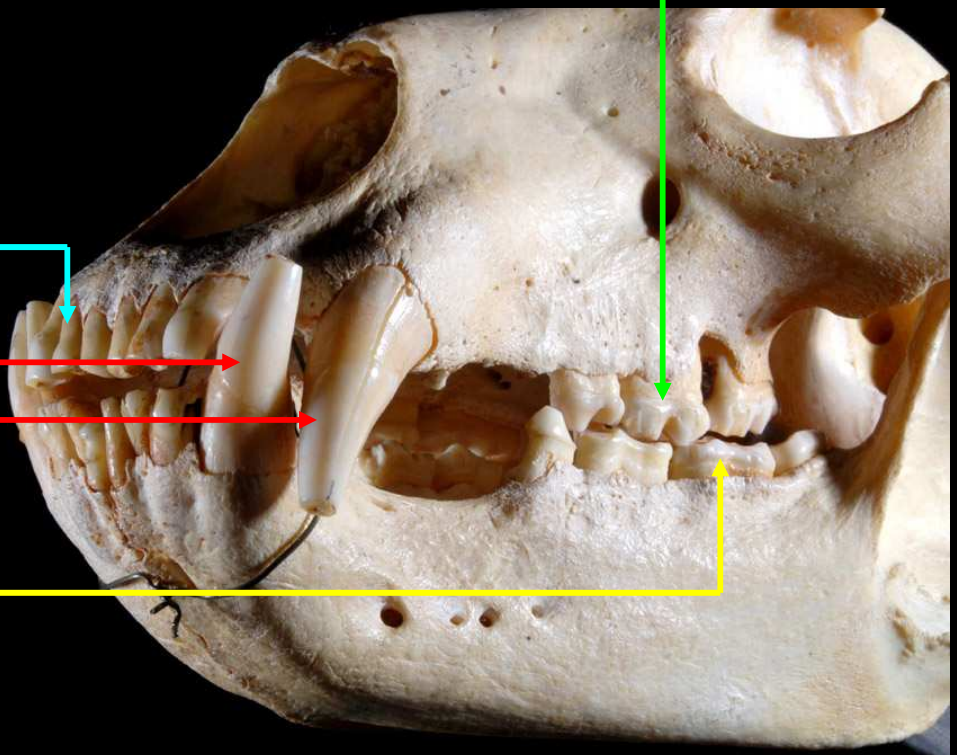
Ours brun (*Ursus arctos*)

Incisives

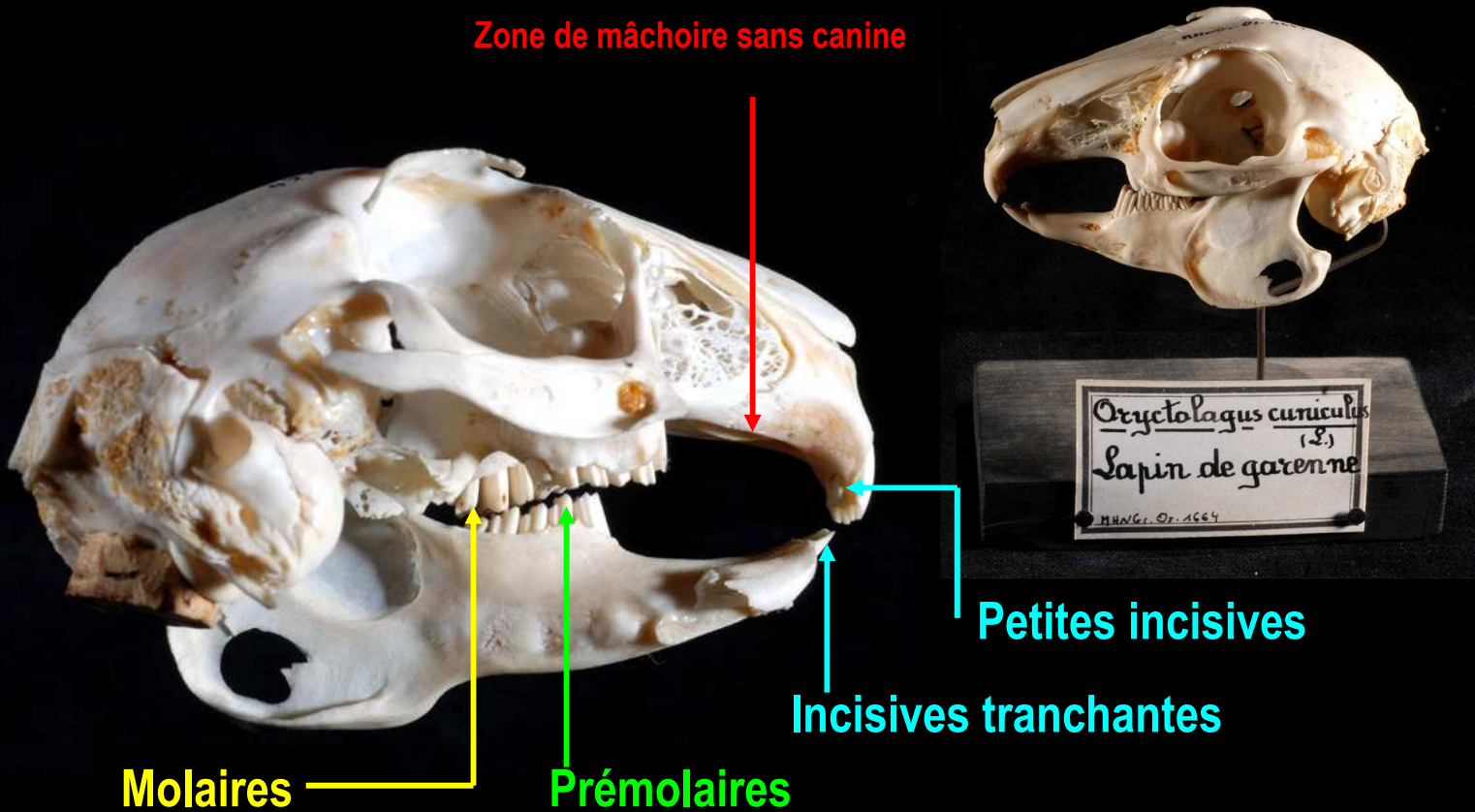
Canines en
crocs

Molaires

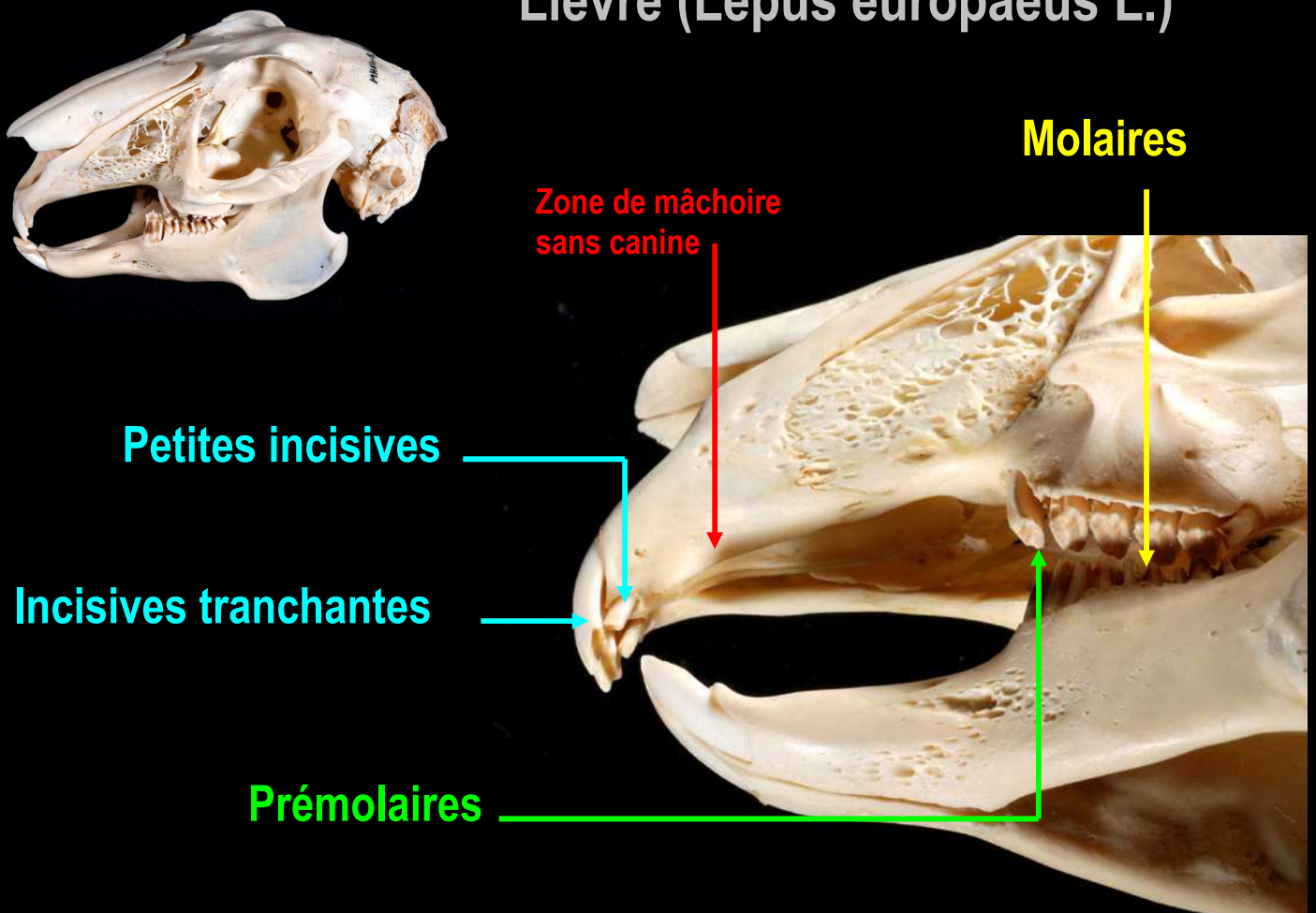
Carnassière



Lapin de Garenne (*Oryctolagus cuniculus*)



Lièvre (*Lepus europaeus* L.)



Ecureuil (*Sciurus vulgaris*)

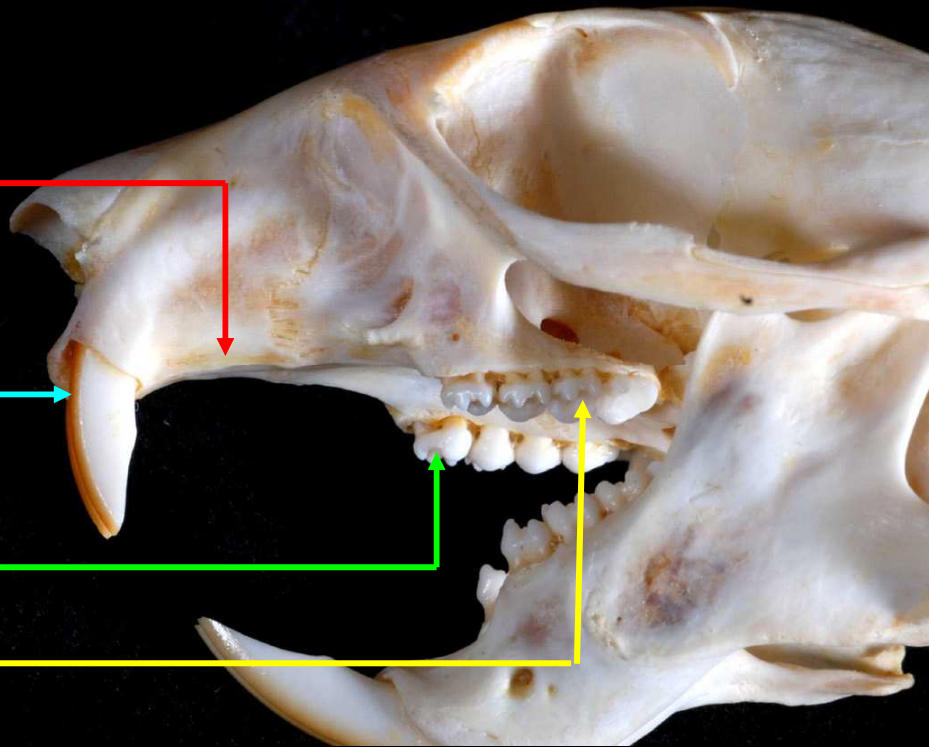


Zone de mâchoire sans canine

Incisives tranchantes

Prémolaires

Molaires



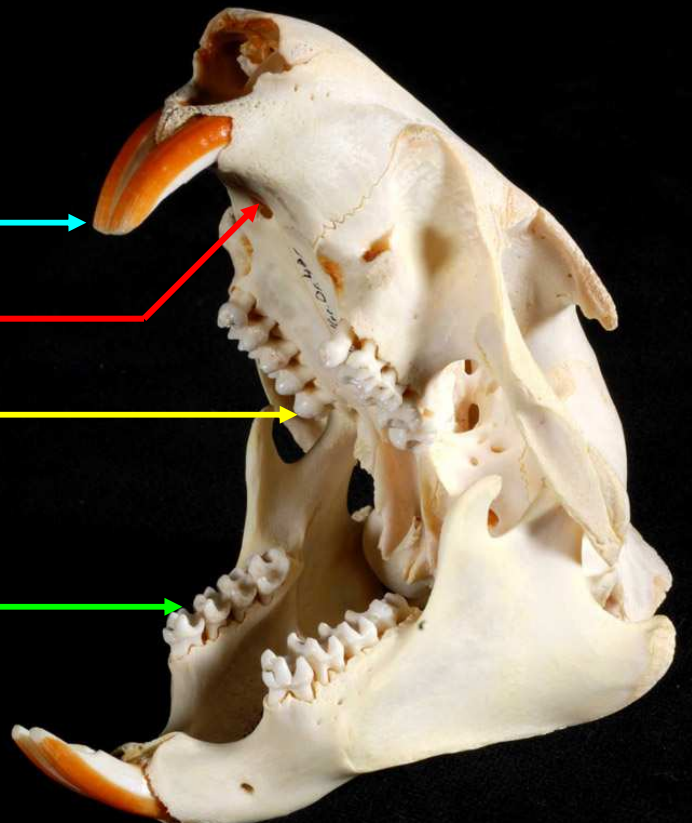
Marmotte (*Marmota marmota*)

Incisives tranchantes

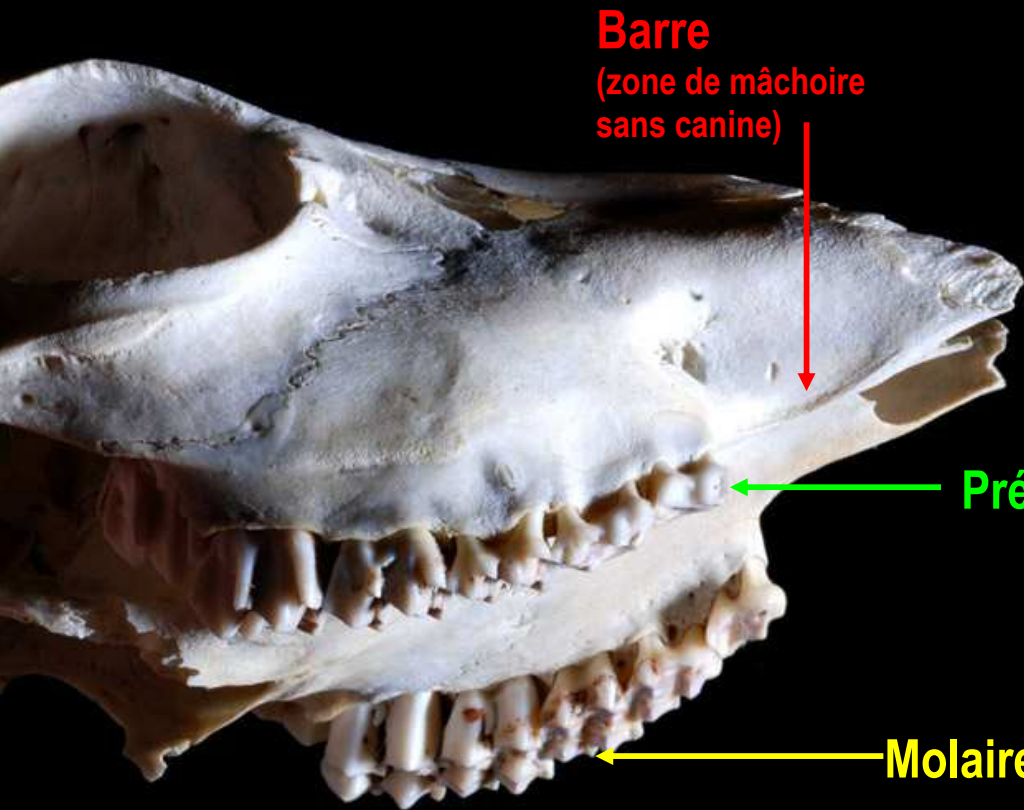
Zone de mâchoire sans canine

Molaires

Prémolaires

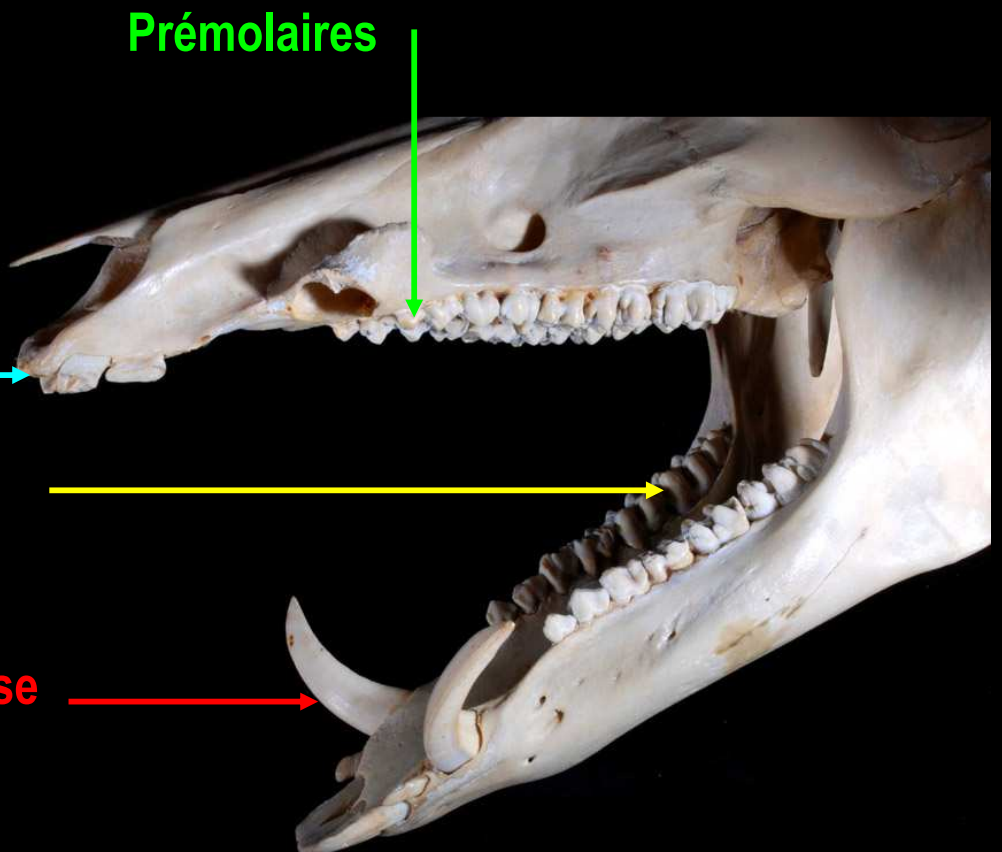


Chevreuril (*Capreolus capreolus*)



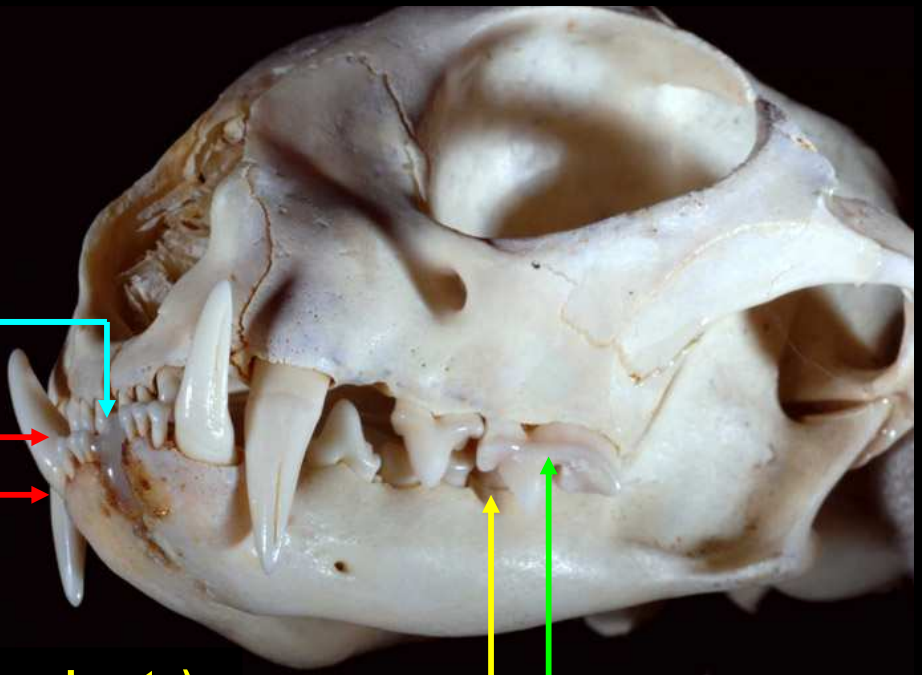
La mâchoire inférieure porte des incisives, des prémolaires et des molaires.

Sanglier (*Sus scrofa*)





Chat sauvage (*Felix silvestris*)

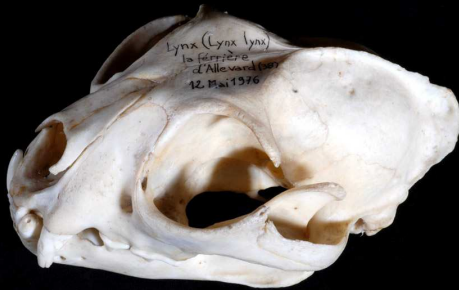


Incisives

Canines en crocs

Carnassière (molaire tranchante)

Carnassière (prémolaire tranchante)



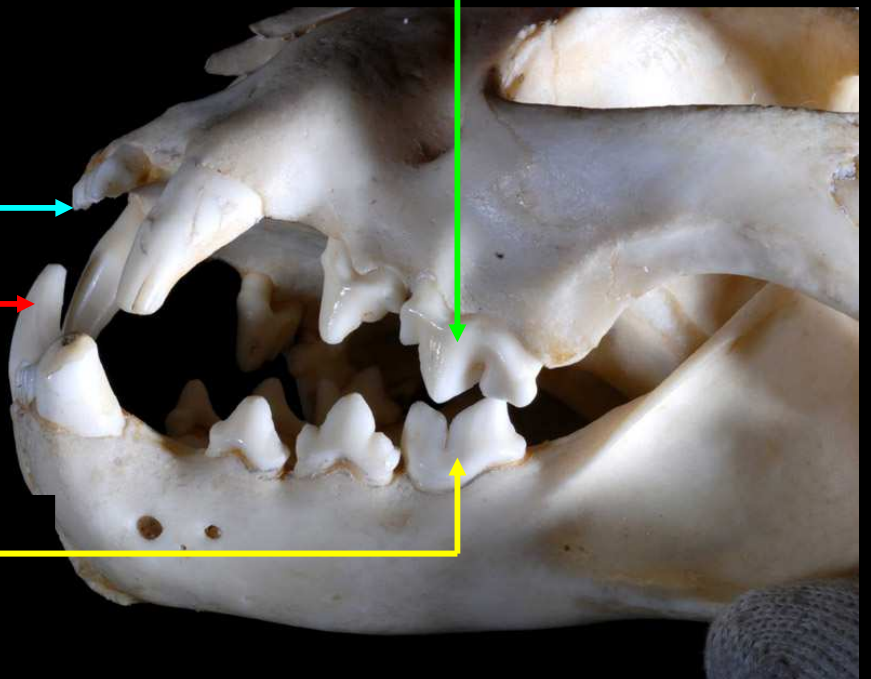
Lynx (*Lynx lynx*)

Carnassière (molaire tranchante)

Incisives

Canines en crocs

Carnassière (molaire tranchante)



Castor (*Castor fiber*)

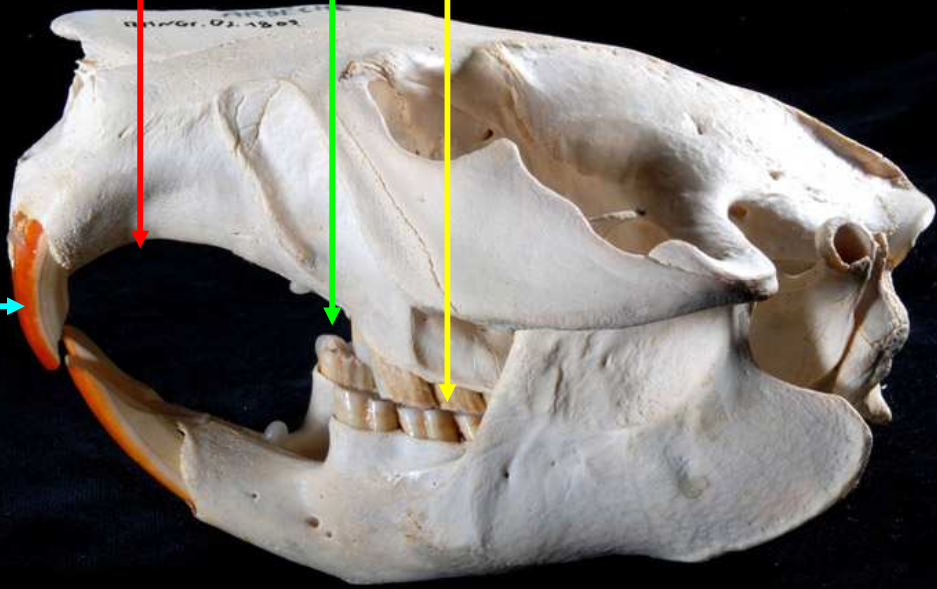


Zone de mâchoire
dépourvue de canines

Prémolaire

Molaires

Incisives
tranchantes



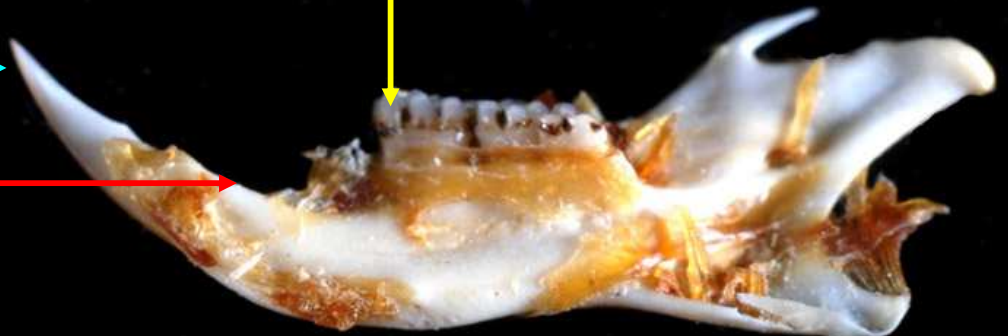
Mulot (*Apodemus sylvaticus*)



Molaires

Incisives
tranchantes

Zone de mâchoire
dépourvue de canines



Bouquetin (*Capra hircus ibex*)

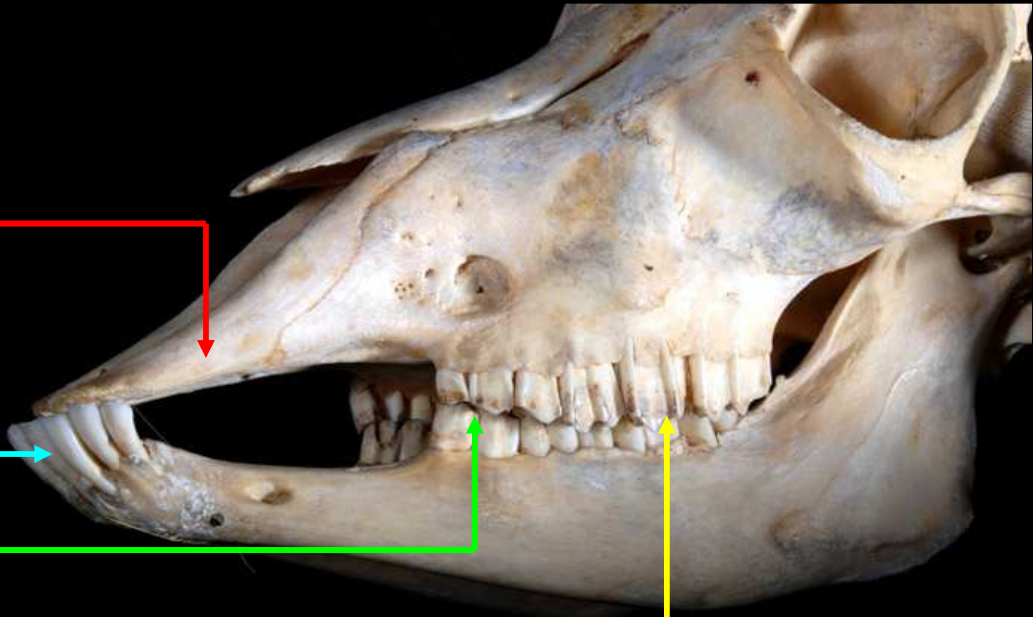


Barre (zone de mâchoire sans canine)

Incisives

Prémolaires

Molaires



Chamois (*Rupricapra rupricapra*)

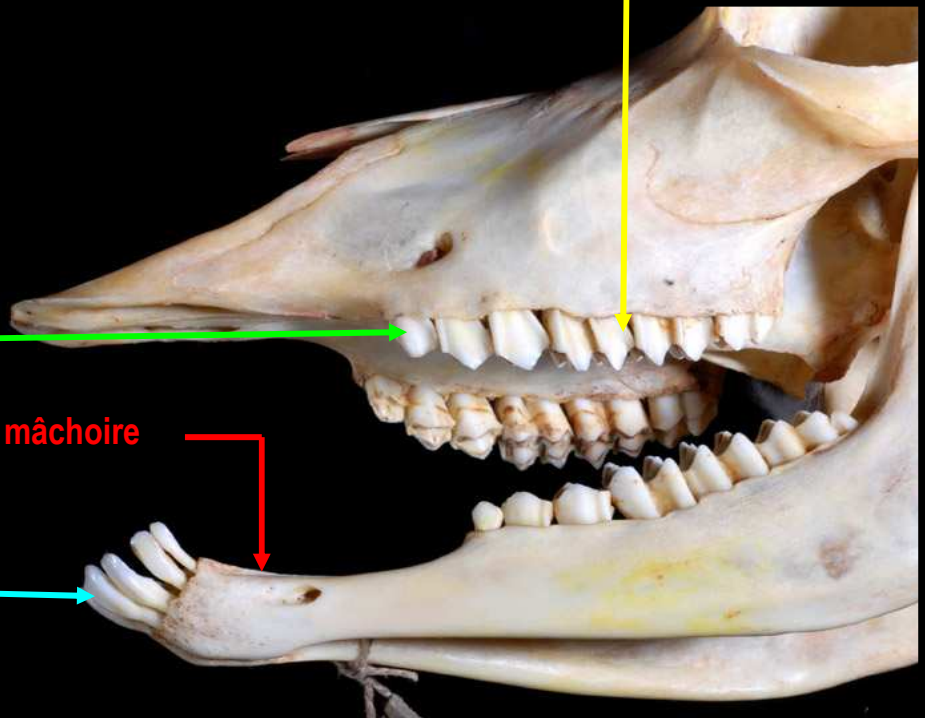


Molaires

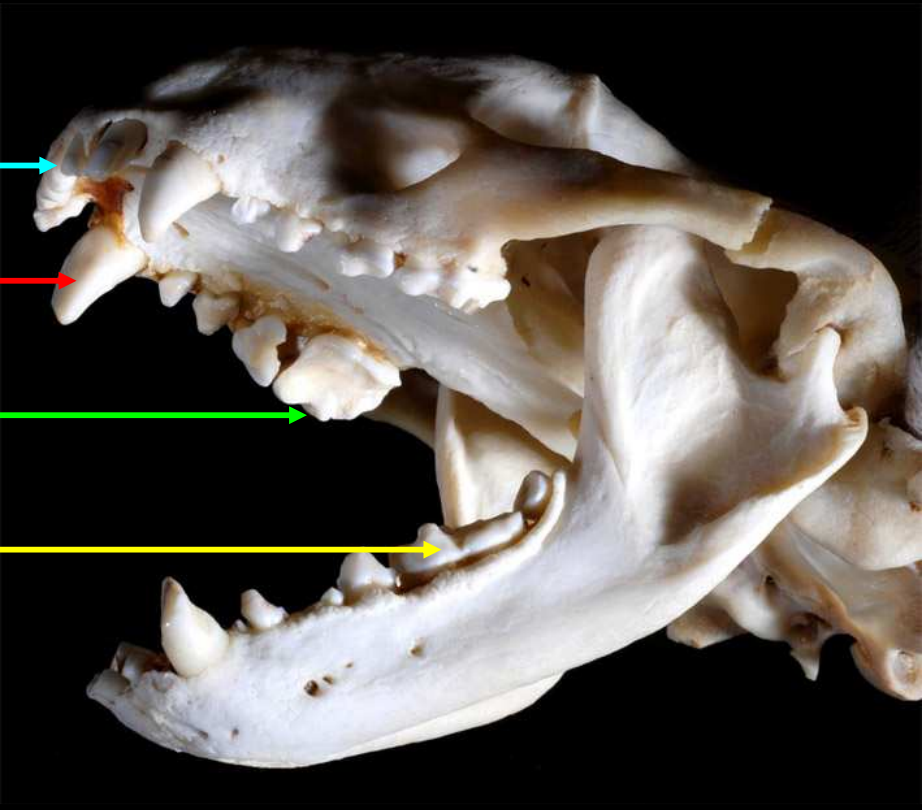
Prémolaires

Barre: zone de mâchoire sans canine

Incisives



Blaireau (Meles meles)



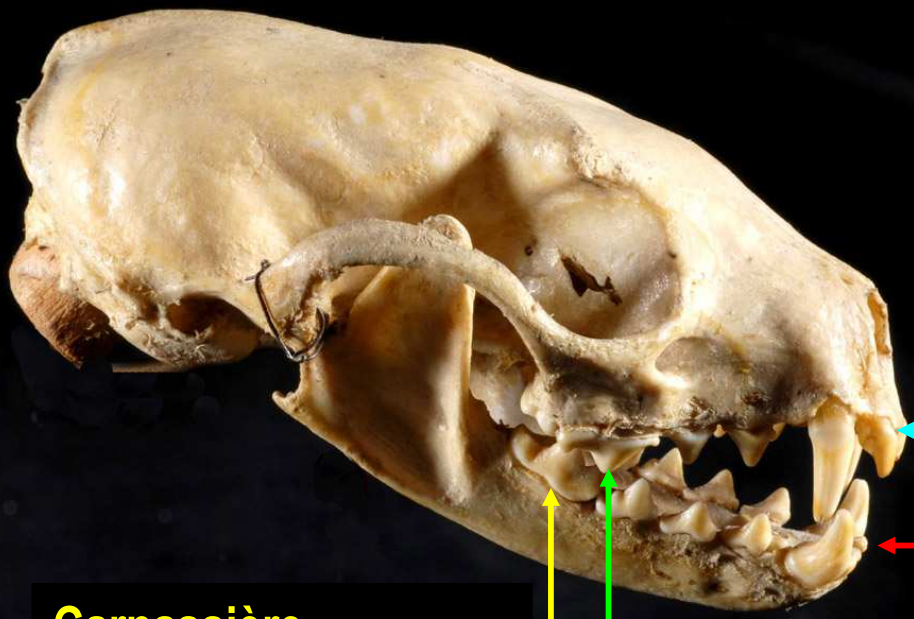
Incisives

Canines en crocs

Carnassière (prémolaire tranchante)

Carnassière (molaire tranchante)

Martre (Martes martes)



Incisives

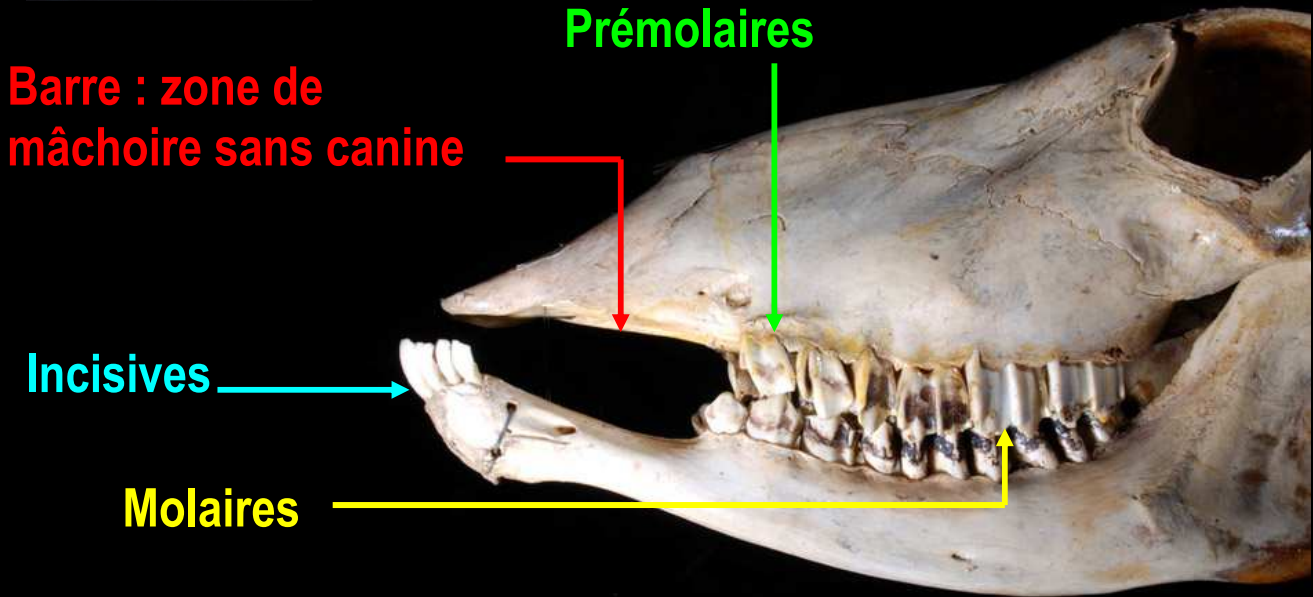
Canines en crocs

Carnassière (molaire tranchante)

Carnassière (prémolaire tranchante)



Antilopes (Dik-dik,
Eland de Derby, Nyala)



Barre : zone de
mâchoire sans canine

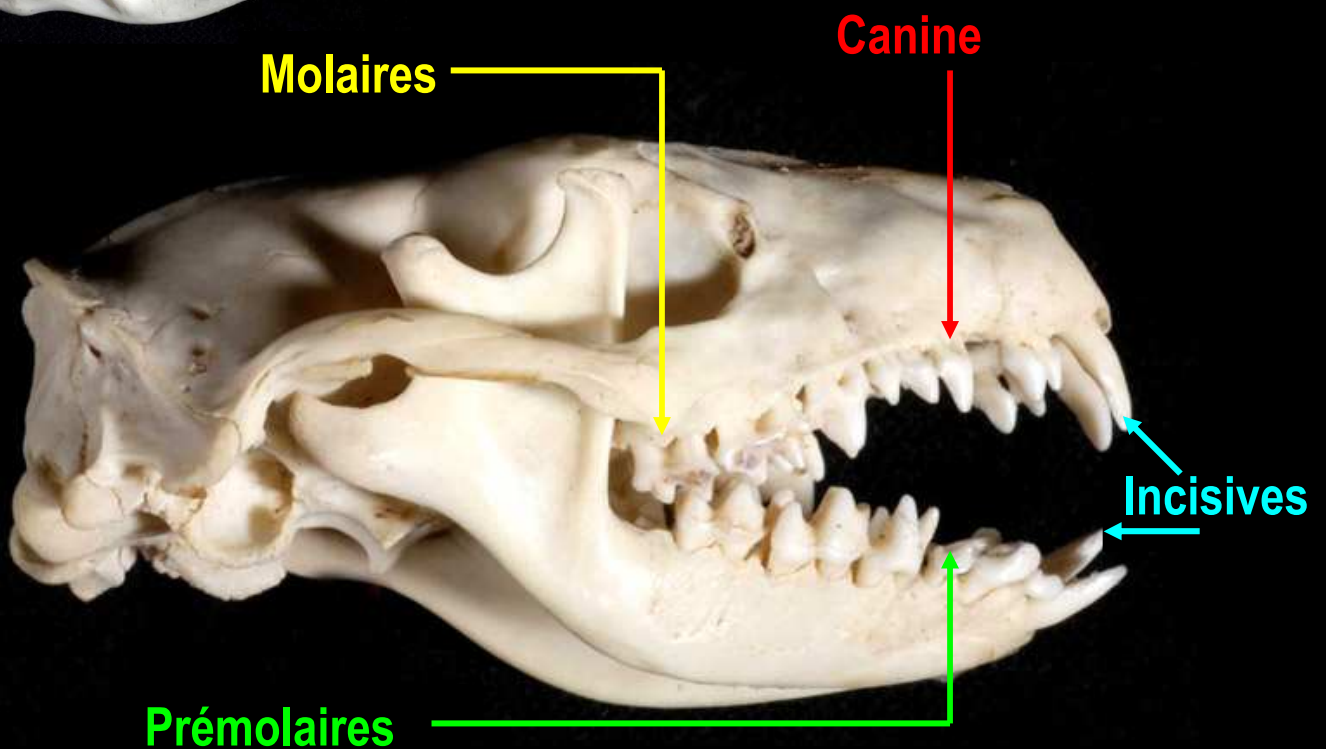
Prémolaires

Incisives

Molaires



Hérisson (*Erinaceus europaeus*)



Canine

Molaires

Incisives

Prémolaires